



SIDE ENTRY BIN VENT

The Nol-Tec side entry bin vent effectively filters dust laden air created by pneumatic conveying systems or other processes.

STANDARD FEATURES:

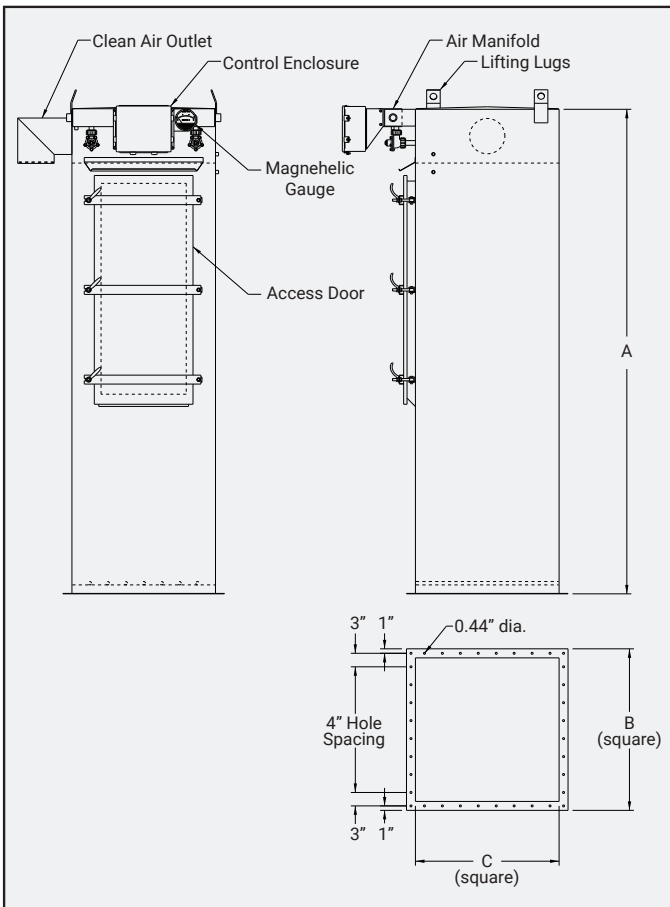
- Heavy gauge continuous welded construction
- Reinforced housing
- Reverse pulse jet cleaning
- Continuous cleaning design
- Bottom grate
- Cartridge or bag filter media
- Magnehelic gauge
- Bird screen or weatherhood with bird screen
- Quick-release bag clamps
- Access door
- Design pressure up to 17" w.g.

SPECIFICATIONS:

- **Compressed air:** Clean and dry at 80 PSIG minimum
- **Electrical:** Designed to meet customers specification
- **Temperature:** Polyester bags 250° F; Polyester cartridge with urethane ends 225° F

OPTIONAL FEATURES:

- Stainless steel construction
- Hazardous location design
- High-temperature design
- Variety of filter media materials available
- Exhauster
- Hopper bottom
- Additional access doors
- Differential pressure automated cleaning



Specifications subject to change without notice

SIDE ENTRY BIN VENT					
Model	Cartridge Filter Area	Bag Filter Area	A	B	C
36NT09	180 ft ²	41 ft ²	60"	28"	24"
60NT09	270 ft ²	68 ft ²	84"	28"	24"
84NT09	540 ft ²	95 ft ²	108"	28"	24"
36NT16	320 ft ²	72 ft ²	60"	36"	32"
60NT16	480 ft ²	120 ft ²	84"	36"	32"
84NT16	960 ft ²	168 ft ²	108"	36"	32"
60NT25	750 ft ²	188 ft ²	84"	44"	40"
84NT25	1,500 ft ²	263 ft ²	108"	44"	40"
60NT36	1,080 ft ²	270 ft ²	84"	52"	48"
84NT36	2,160 ft ²	378 ft ²	108"	52"	48"
60NT49	1,470 ft ²	368 ft ²	84"	60"	56"
84NT49	2,940 ft ²	515 ft ²	108"	60"	56"
60NT64	1,920 ft ²	480 ft ²	84"	68"	64"
84NT64	3,840 ft ²	672 ft ²	108"	68"	64"
60NT81	2,430 ft ²	608 ft ²	84"	76"	72"
84NT81	4,860 ft ²	851 ft ²	108"	76"	72"
60NT100	3,000 ft ²	750 ft ²	84"	84"	80"
84NT100	6,000 ft ²	1,050 ft ²	108"	84"	80"

*Larger size models available upon request

TRUSTED TO DELIVER®

Nol-Tec Systems, Inc | 425 Apollo Drive | Lino Lakes, MN 55014
651.780.8600 | sales@nol-tec.com | www.nol-tec.com

